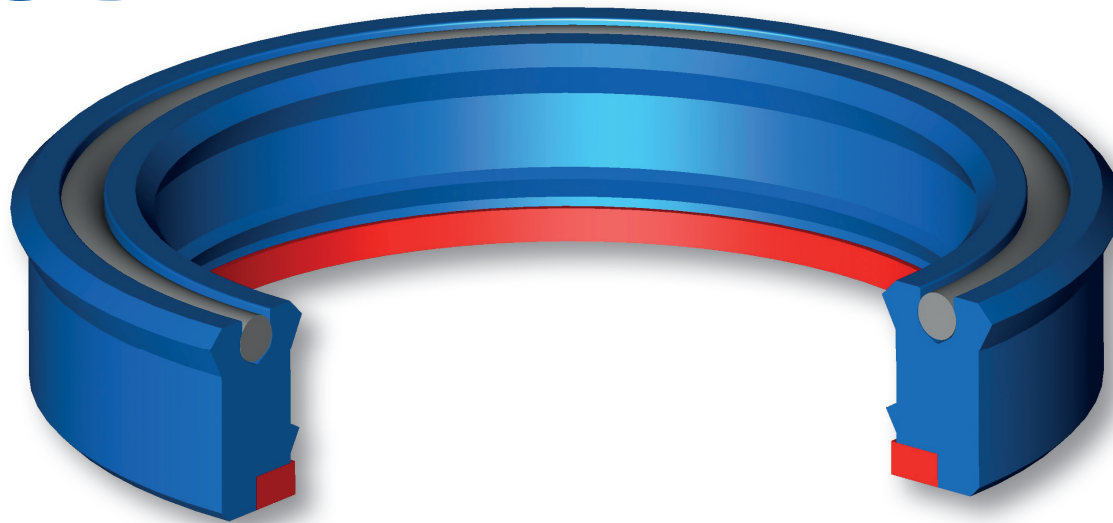


# SDAN



SDAN

The seal type Aston Seals SDAN is the natural further development of the SDA seal. It is a high performance all purpose lipseal which combines the advantage of a highly elastic rubber and the abrasion resistance of polyurethane.

This seal is mainly used with high pressure and the backup ring offsets large gaps without extrusion.

Wear and dry run are largely prevented by additional lubricant retained within the gap created by the secondary lip. In some cases this second sealing lip may even act as a substitute for a costly tandem sealing system when complete sealing under certain working conditions can only be achieved by two seals placed one behind the other in separate housing.

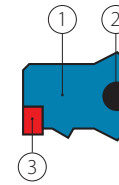
The energizing O-Ring guarantees a good

sealing performance in the low pressure range.

The material used to produce this seal is a polyurethane compound that ensures excellent properties on wear-resistance, extended service life and resistance against extrusion.

- Very high resistance against extrusion (backup ring)
- Good sealing performance as well as at low pressure
- Extended service life
- Excellent wear-resistance
- Good temperature resistance
- Insensitive to pressure fluctuation
- Easy installation without expensive auxiliaries

## MATERIAL

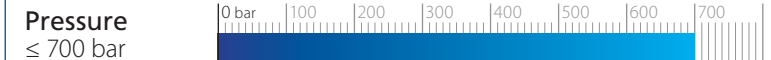


① **Type** Polyurethane  
**Designation** SEALPUR 93  
**Hardness** 93 °ShA

② **Type** Nitril Rubber NBR  
**Designation** RUBSEAL 70  
**Hardness** 70 °ShA

③ **Type** Acetal resin  
**Designation** BEARITE

## FIELD OF APPLICATION



**Fluids** Hydraulic oils (mineral oil based)  
 For other fluids contact our technical department

## SURFACE ROUGHNESS

**Dynamic surface** Ra ≤ 0.3 µm Rt ≤ 2.5 µm  
**Static surface** Ra ≤ 1.6 µm Rt ≤ 6.3 µm

## GAP DIMENSION "g"

The largest gap dimension appearing in operation on the non-pressurised side:

200 bar	0.80 mm	500 bar	0.40 mm
300 bar	0.65 mm	600 bar	0.33 mm
400 bar	0.50 mm	700 bar	0.25 mm

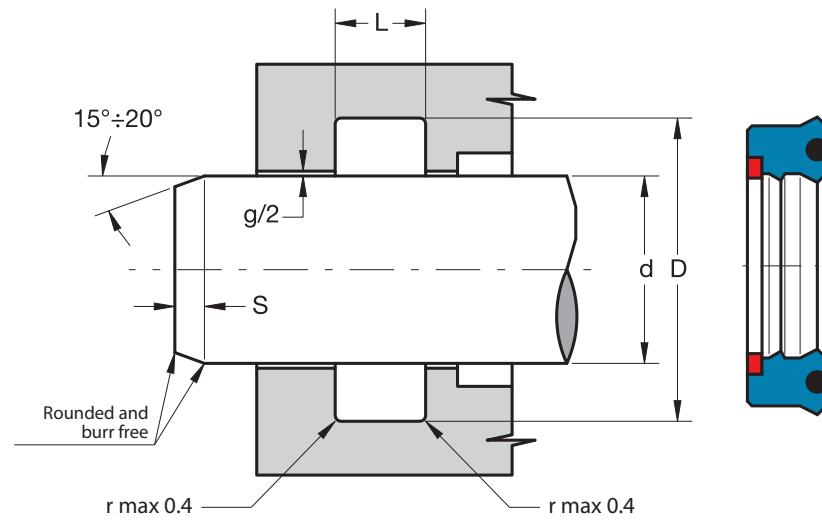
## LEAD-IN CHAMFERS

d	Smin
less 100	5 mm
100÷200	7 mm
over 200	10 mm

To avoid damaging the sealing lips during installation, housing must have rounded chamfers. Sharp edges and burrs within the installation area of the seal must be removed.

The above data are maximum values, they may be maintained for short periods and can not be used at the same time simultaneously.

# SDAN



Part.	d <sup>f7</sup>	D <sup>H10</sup>	L <sup>+0.25</sup>
<b>SDAN 40 50 7</b>	40	50.0	8.0
<b>SDAN 50 59 10</b>	50	59.0	11.0
<b>SDAN 50 65 11.5</b>	50	65.0	12.5
<b>SDAN 60 75 11.5</b>	60	75.0	12.5
<b>SDAN 63 78 11.5</b>	63	78.0	12.5
<b>SDAN 70 85 11.5</b>	70	85.0	12.5
<b>SDAN 80 95 11.5</b>	80	95.0	12.5
<b>SDAN 90 105 11.5</b>	90	105.0	12.5
<b>SDAN 110 130 14.5</b>	110	130.0	15.5
<b>SDAN 120 140 14.5</b>	120	140.0	15.5
<b>SDAN 158 166 11</b>	158	166.0	12.0

Inch sizes

<b>SDAN 1000 1250 0250</b>	25.40	31.75	7.35
<b>SDAN 1500 1875 0375</b>	38.10	47.63	10.50
<b>SDAN 1500 2000 0375</b>	38.10	50.80	10.50
<b>SDAN 1750 2125 0375</b>	44.45	53.98	10.50
<b>SDAN 3500 4000 0375</b>	88.90	101.60	10.50