

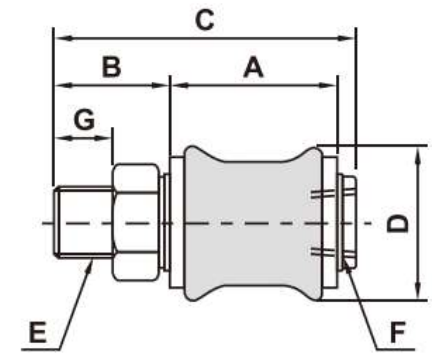
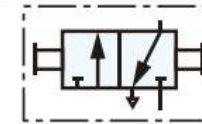
Sleeve valve

How to order

HV	-	02	N
Sleeve valve	Port size	Thread	
	01 :1/8"	Blank :G	
	02 :1/4"	N :NPT	
	03 :3/8"	R :PT	
	04 :1/2"		

*Apply to standard FRL series 1/8", 1/4", 3/8", 1/2"

HV-01, 02, 03, 04



Part no.	Dimension	A	B	C	D	E	F	G	H
HV-01		30	17	50	Ø24.5	1/8"	1/8"	8	14
HV-02		32.5	22	58	Ø29.5	1/4"	1/4"	11	19
HV-03		39	26	68.5	Ø34.5	3/8"	3/8"	13.5	22
HV-04		50	32	85.5	Ø44.5	1/2"	1/2"	16.5	30