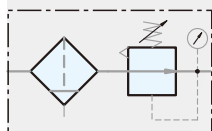


## Symbol



Filter Regulator

## Features

- \* Remove water and particle effectively.
- \* 40  $\mu\text{m}$  and 5  $\mu\text{m}$  filter element are easily interchangeable and replaceable.
- \* Accurate and easy pressure setting.



## How to order

<b>UAC30A</b>	<b>-</b>	<b>02</b>	<b>N</b>	<b>C</b>	<b>H</b>	<b>A</b>
Filter Regulator	Port size	Thread	Filtration	Drain	Bowl	
	<b>02</b> 1/4"	<b>Blank</b> G	<b>Blank</b> 5 $\mu\text{m}$	<b>Blank</b> Semi-auto drain	<b>Blank</b> Standard bowl	
	<b>03</b> 3/8"	<b>N</b> NPT	<b>C</b> 40 $\mu\text{m}$	<b>H</b> Manual drain	<b>A</b> Anti-acid & alkali bowl	
		<b>R</b> Rc		<b>D</b> Auto drain		

## Specifications

Model	UAC30A-02	UAC30A-03
Port size	1/4"	3/8"
Fluid	Compressed air	
Regulator construction	Diaphragm	
Body material	Aluminum die-cast	
Bowl material	Polycarbonate	
Filtration	5 $\mu\text{m}$ (Standard), 40 $\mu\text{m}$ (Option)	
Operating pressure range	0.5 ~ 9.9 kgf/cm <sup>2</sup>	
Proof pressure (Standard bowl)	15 kgf/cm <sup>2</sup>	
Max. flow rate 6 kgf/cm <sup>2</sup> (ANR)	1900 l/min	
Ambient temperature	-10 $^{\circ}\text{C}$ ~ 60 $^{\circ}\text{C}$	
Filter bowl capacity	20cc	
Standard drain	Semi-auto drain (Drains below 0.5kgf/cm <sup>2</sup> )	
Net weight	370g	
Accessories	Pressure gauge, Mounting bracket, Plug	

## Dimensions

### UAC30A-02, 03

