

## Features

### Shuttle valve

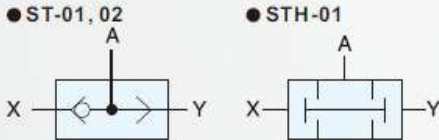
- \* Check ball moves from high pressure inlet to low pressure inlet.
- \* The valve provides two inlets for air supply.
- \* Available port size G1/8", 1/4".

### Double pressure valve

- \* The valve provides X and Y inlet for double pressure supply.



## Symbol



## How to order

**ST**

**01**

**N**

ST	Shuttle valve
STH	Double pressure valve

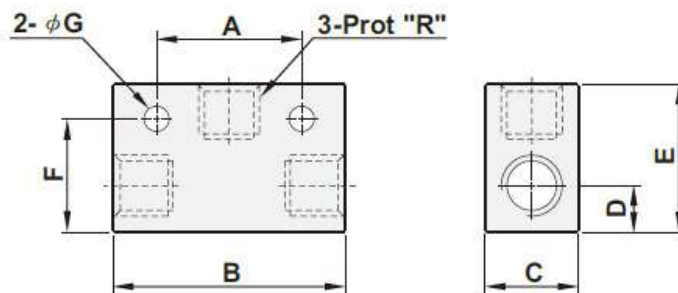
Port size	
01	1/8"
02	1/4"

Thread	
Blank	G
N	NPT
R	Rc

## Specifications

Model	ST-01	ST-02	STH-01
Port size	1/8"	1/4"	1/8"
Body material	Aluminum alloy		
Fluid	Compressed air		
Sectional area	7.5mm <sup>2</sup>	21mm <sup>2</sup>	14mm <sup>2</sup>
Operating pressure range	0.8 ~ 9.9 kgf/cm <sup>2</sup>		
Proof pressure	10 kgf/cm <sup>2</sup>		
Ambient temperature	-10°C ~ 80°C		
Max. flow rate l/min	823	1583	857

## Dimensions



Model	R	A	B	C	D	E	F	G
STH-01	1/8"	25.0	40.0	16.0	8.0	25.4	19.5	4.3
ST-01	1/8"	25.0	40.0	16.0	8.0	25.4	19.5	4.3
ST-02	1/4"	35.0	52.0	22.0	11.0	35.0	25.0	5.5